

Early Norman stone keep castles were built for defence rather than comfort. There were few windows, so it was always quite dark. The castle was stuffy in summer, and cold in winter. Private rooms in early castles were rare, so the lord and his family often had to share their space with their servants. It was busy, noisy and smelly.



The Lord

The lord and his family would live in the **keep**. It was the lord's role to manage their lands and **ensure law and order** among their villagers. Each day, after praying and eating breakfast, the lord would attend to **business matters**, such as making sure taxes were being paid by his tenants, and sorting out any disputes. In the afternoon, the lord might **inspect his land, go hunting, or practise his skills with weapons**. In the evening, supper was served in the Great Hall. There may have been **entertainment** from jugglers, jesters, acrobats or minstrels (singers or musicians). On special occasions, **banquets** (feasts) would be held.



Soldiers

The soldiers lived in the **bailey**. Their role was to **protect the lord**, his castle and land. They could also be called up to fight for the king himself. Most of a soldier's day was spent **patrolling the surrounding area** owned by the lord, making sure that law and order were upheld. It is thought that, in some areas, they might have walked up to 30 miles a day. If they used horses, they could cover an even bigger area. Soldiers also spent time **practising and improving their weapon skills**. In the little free time they had, they rested and prayed, and may have gambled.

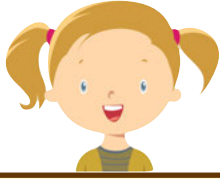


Servants

The role of the servant was to ensure that the life of the lord and his family was as **comfortable** as possible. Depending on a servant's specific job, they may live in the **keep or the bailey**. Female servants generally **cooked, cleaned and waited on** their lord in the keep. They would usually sleep on the floor in the Great Hall. Male servants might be **stable hands** (who fed and groomed the horses), or **blacksmiths** (who made and repaired weapons). Both horses and weapons were very important to the lord and his soldiers. Servants **worked long hours** for little thanks.

Name: _____

Date: _____



Use the Life in a Castle Sheet to help you answer the following questions. Answer in as much detail as you can.

What is the role of the **lord**?

What is the role of the **soldiers**?

What is the role of the **servants**?

How might the lord of the castle spend his afternoons?

What did a soldier spend most of the day doing, and why?

Why were stable hands and blacksmiths important to the lord and his soldiers?

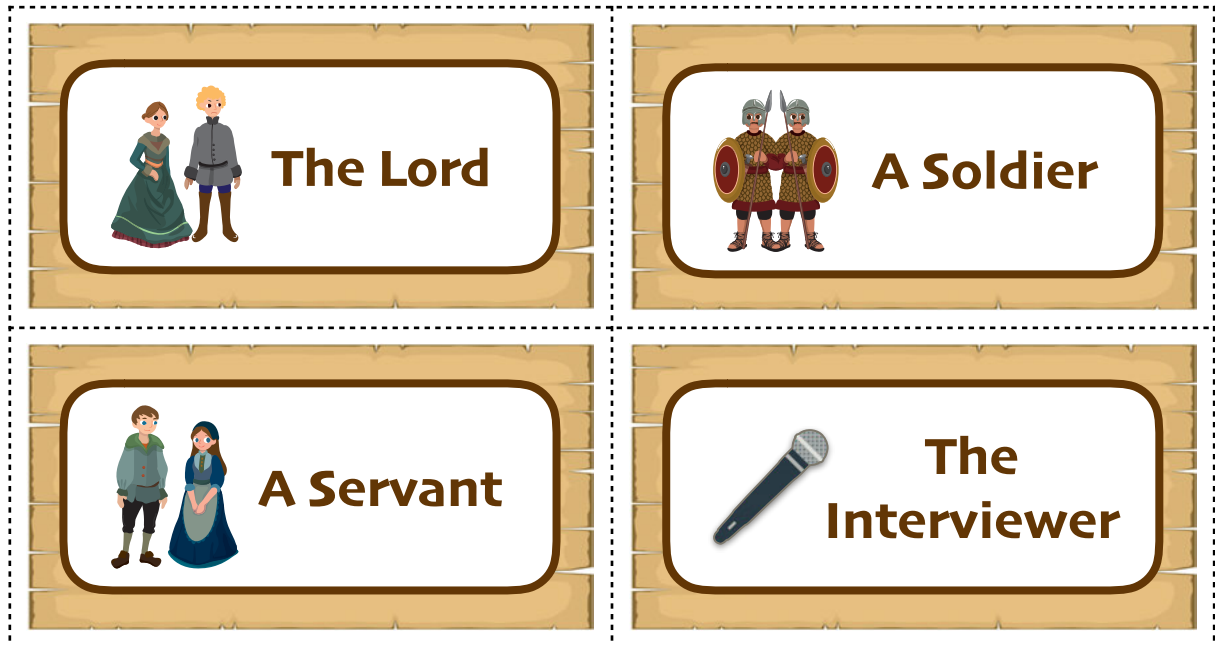
What one question would you like to ask a **lord**?

What one question would you like to ask a **soldier**?

What one question would you like to ask a **servant**?

In your group, first read and discuss the Life in the Castle Sheet. Then, using this information, prepare a 'talkshow': one of you is the **interviewer**, one the **lord** of the castle, one a **soldier**, and one a **servant**. You can use the Name Tags and the Question Bank to help you. Take it in turns to play all four different roles!

Name Tags:

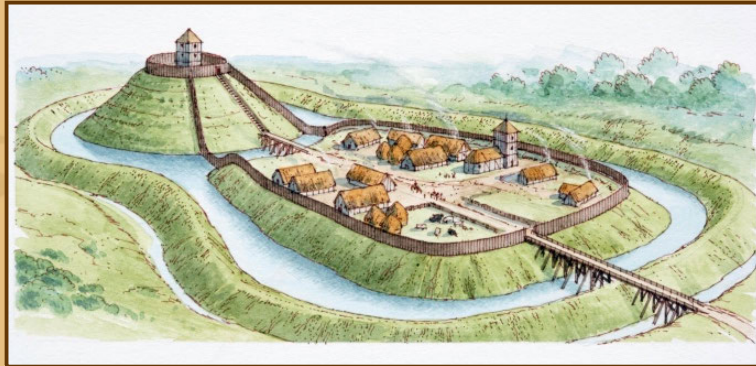


Question Bank

What is your role in the castle?	Tell us about a typical day for you.	What is the best thing about your life in the castle?
What is the worst thing about your life in the castle?	What do you do in your leisure time?	Do you feel safe in the castle?

You can ask your own questions too!

Castle-Building Challenge!



If you are building a model of a **motte and bailey castle**, you must include as many of the following features as you can:

- A **motte**, or mound
- A **keep** on top of the motte
- A **bailey**, complete with buildings for the people and livestock to live in
- **Palisades** surrounding the motte and bailey
- A **moat** surrounding the castle

Castle-Building Challenge!



If you are building a model of a **stone keep castle**, you must include as many of the following features as you can:

- A large **keep**
- A thick, outer wall, with **battlements**, surrounding the keep
- **Arrowslits** in the walls
- A **portcullis**
- A **drawbridge** over the moat